

ANGLESEA

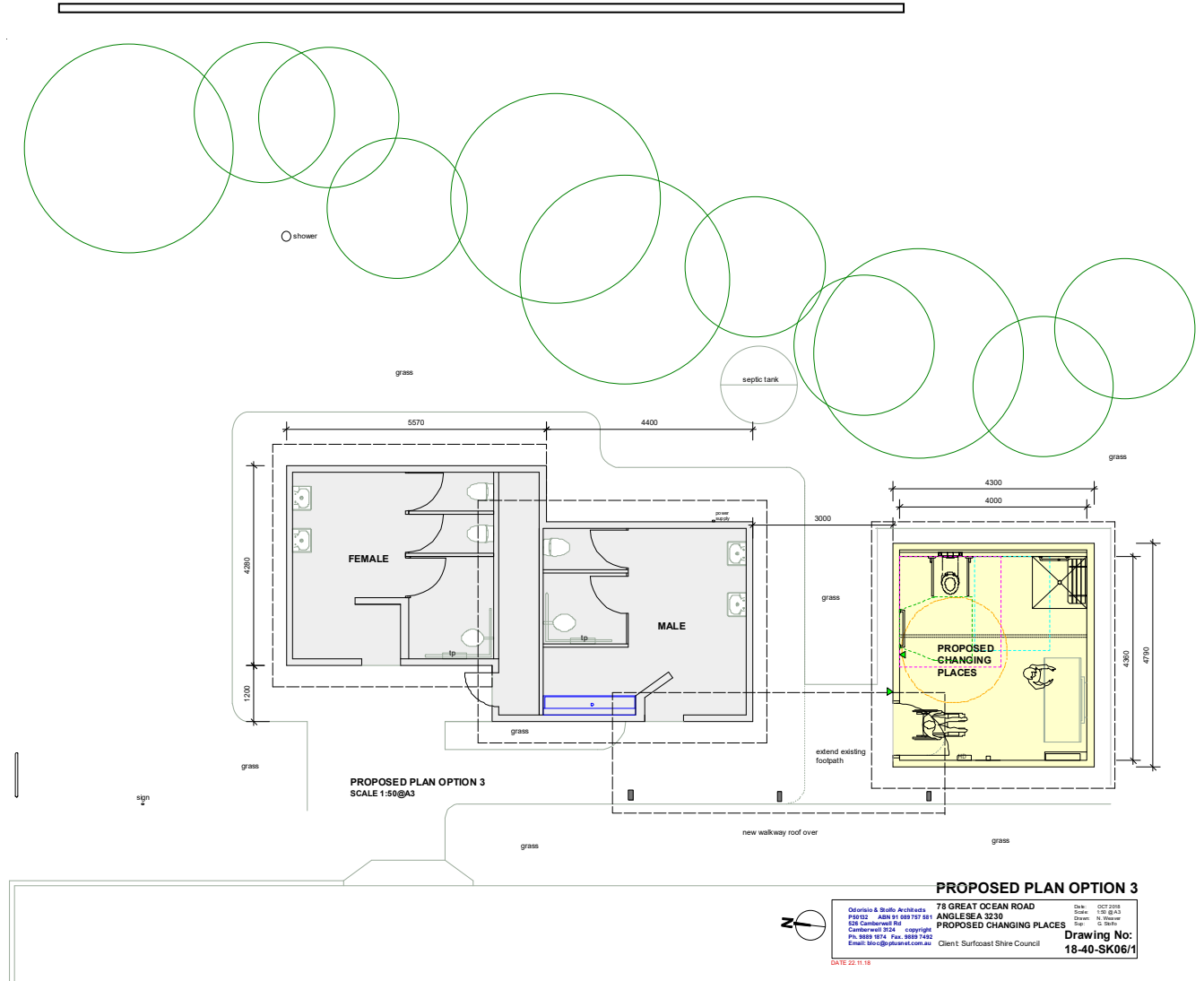
Existing conditions



Existing conditions



Proposed General View



Proposed plan outline

Finishes

Existing Finishes:

Walls

- Painted weatherboard -grey/green colour

Roof:

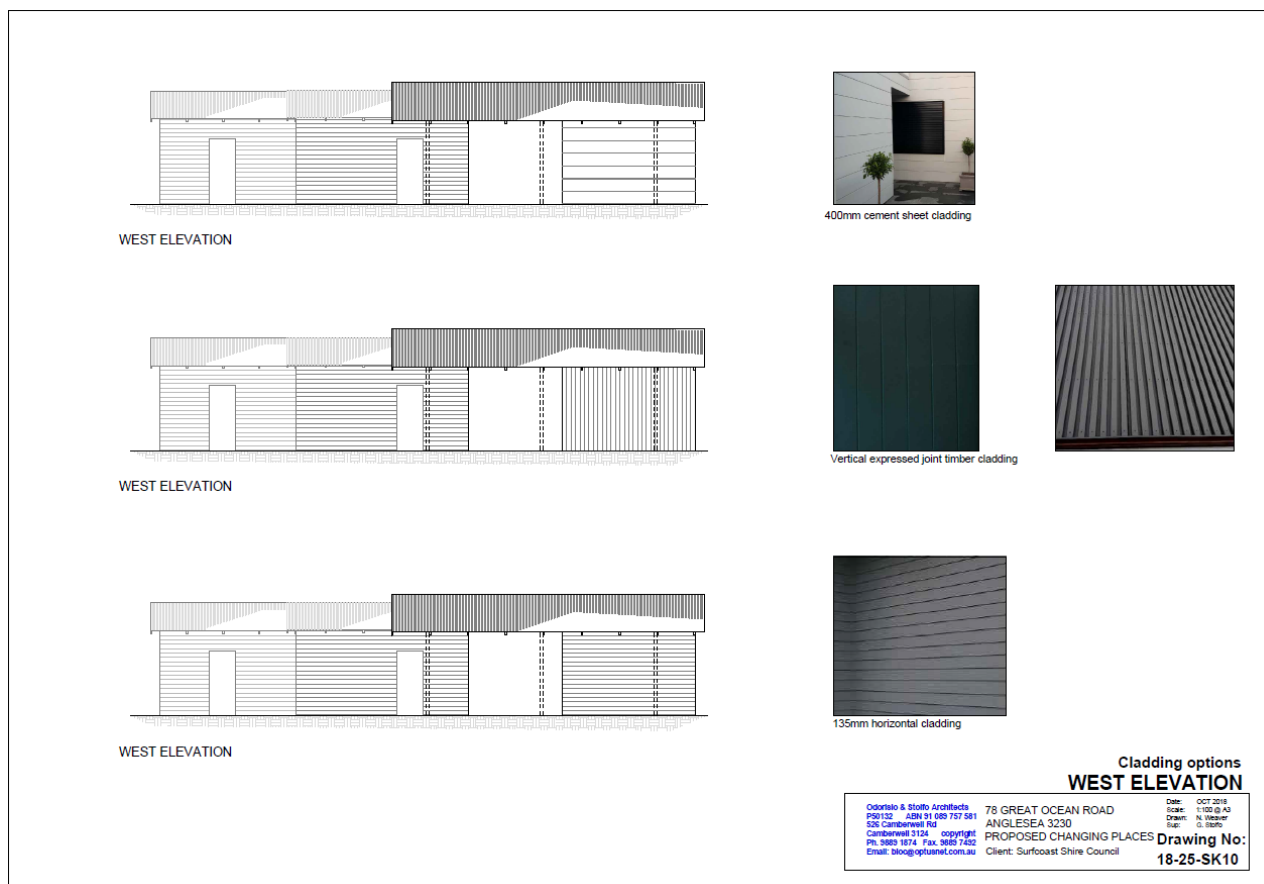
- curved colorbond corrugated sheet- sim. to pale eucalypt.

Proposed finishes:

Walls: preferred alternative options include:

- Scyon Stria 325mm horizontal panels;
- Colorbond Vertical Metal ribbed cladding – colour monument;
- Vertical ash slats on marine ply backing; natural ash colour or grey stain, black background;
- Scyon Linea weatherboards emulating existing but in a more durable finish;

Roof : curved colorbond corrugated sheet, proposed colour-Windspray or Dune

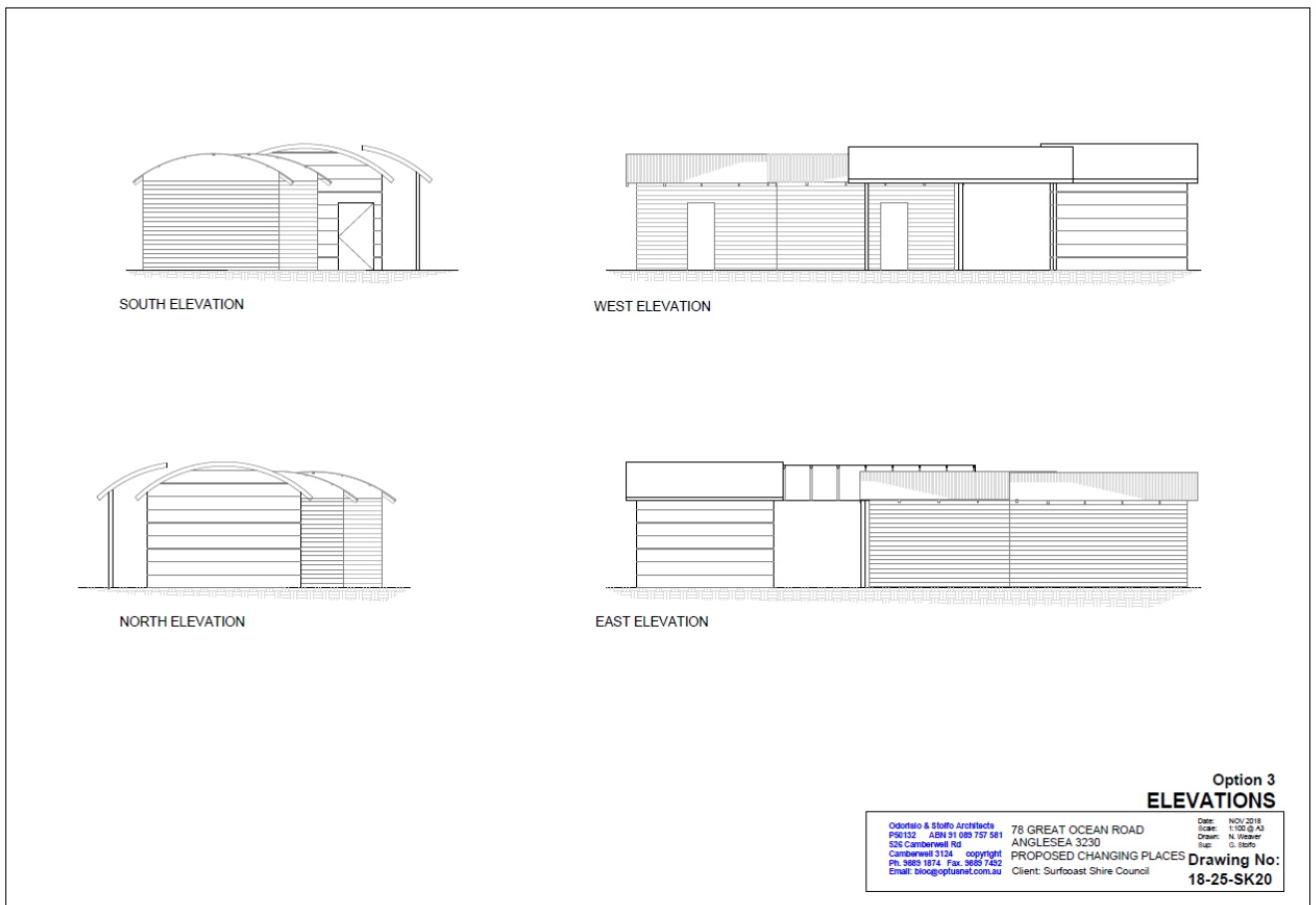


Sample of possible finishes Option 1, Option 2, Option 2a, Option 3

Proposed Finishes

Option 1

Scyon 400mm horizontal panels;
Durable
Non-Flammable
Scyon STRIA
Colour: Dulux Klute
Roof: Colorbond ultra
Colour: Windspray/ Dune





Front view 1-1



View 1-2



View 1-3



View 1-4

Option 2

Colorbond Vertical Metal interlocking panel cladding;

Durable

Non-Flammable

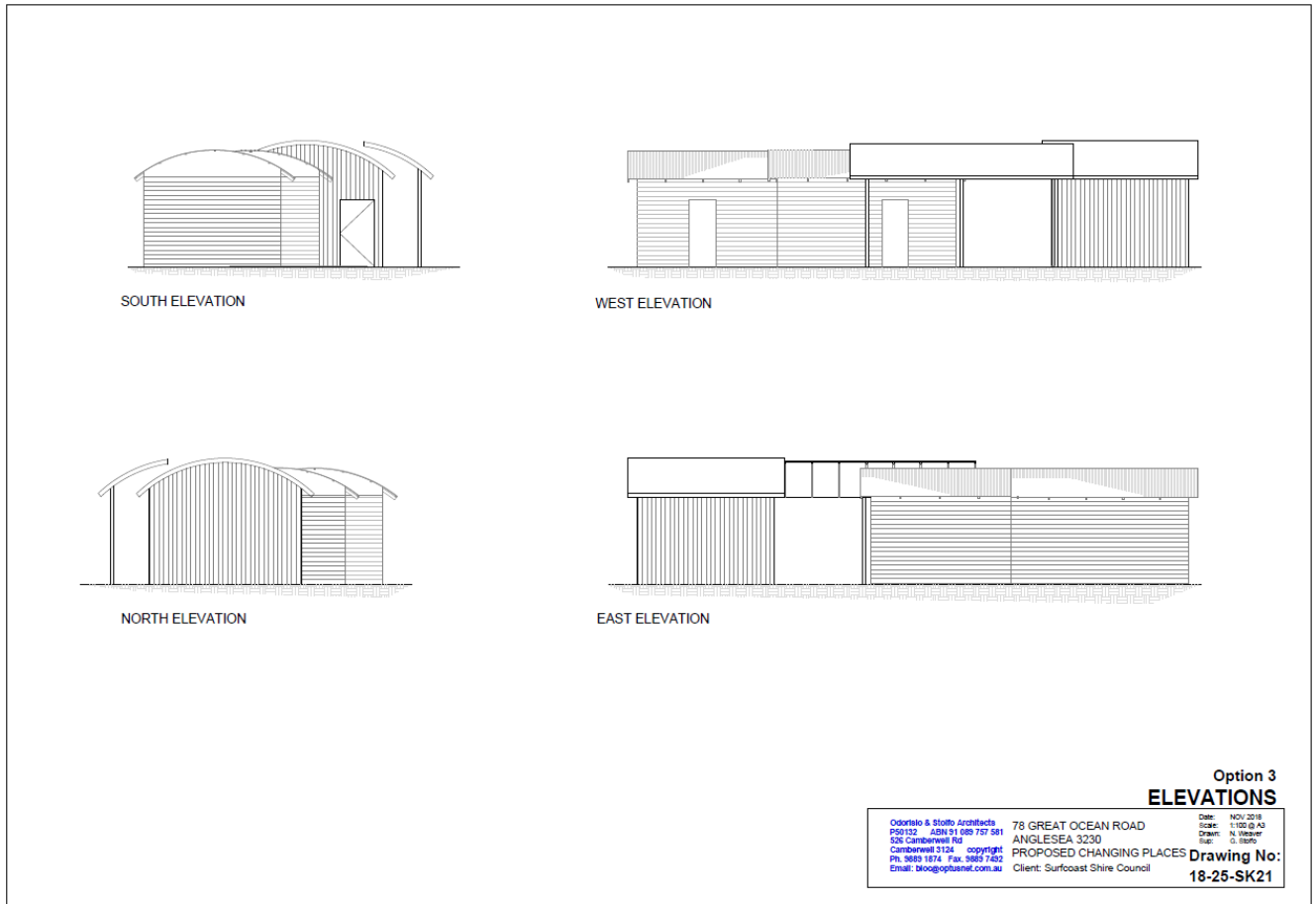
Metal vertical ribs 135mm wide interlocking strips.

Metal Cladding Systems

Colour: Colorbond monument

Roof: Colorbond ultra

Colour: Windspray/ Dune





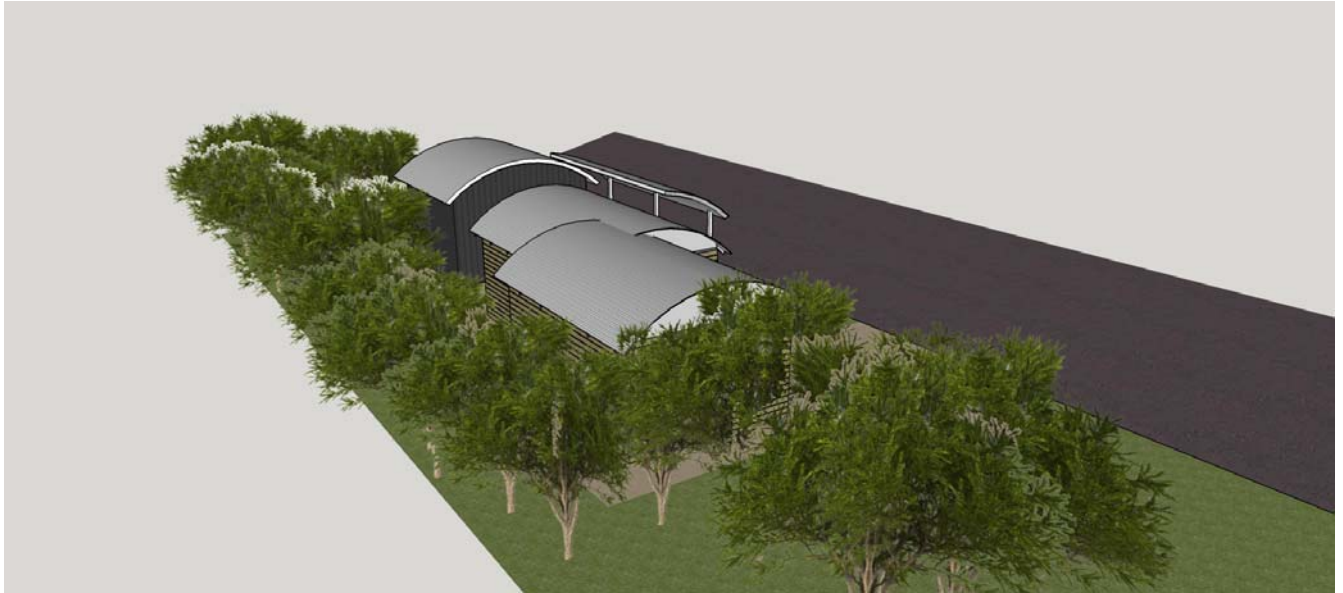
Front View 2-1



View 2-2



View 2-3



View 2-4

Option 2a

Vertical mountain ash slats on marine ply backing;
Contrasting finish
20mm marine ply
50x50 slats at 50mm centres
Colour: natural ash colour or grey stain, black background;
Roof: Colorbond ultra
Colour: Windspray/ Dune



Front View 2a-1



View 2a-2



View 2a-3



View 2a-4

Option 3

Scyon 150-180 mm horizontal panels (Weatherboard look)

Durable

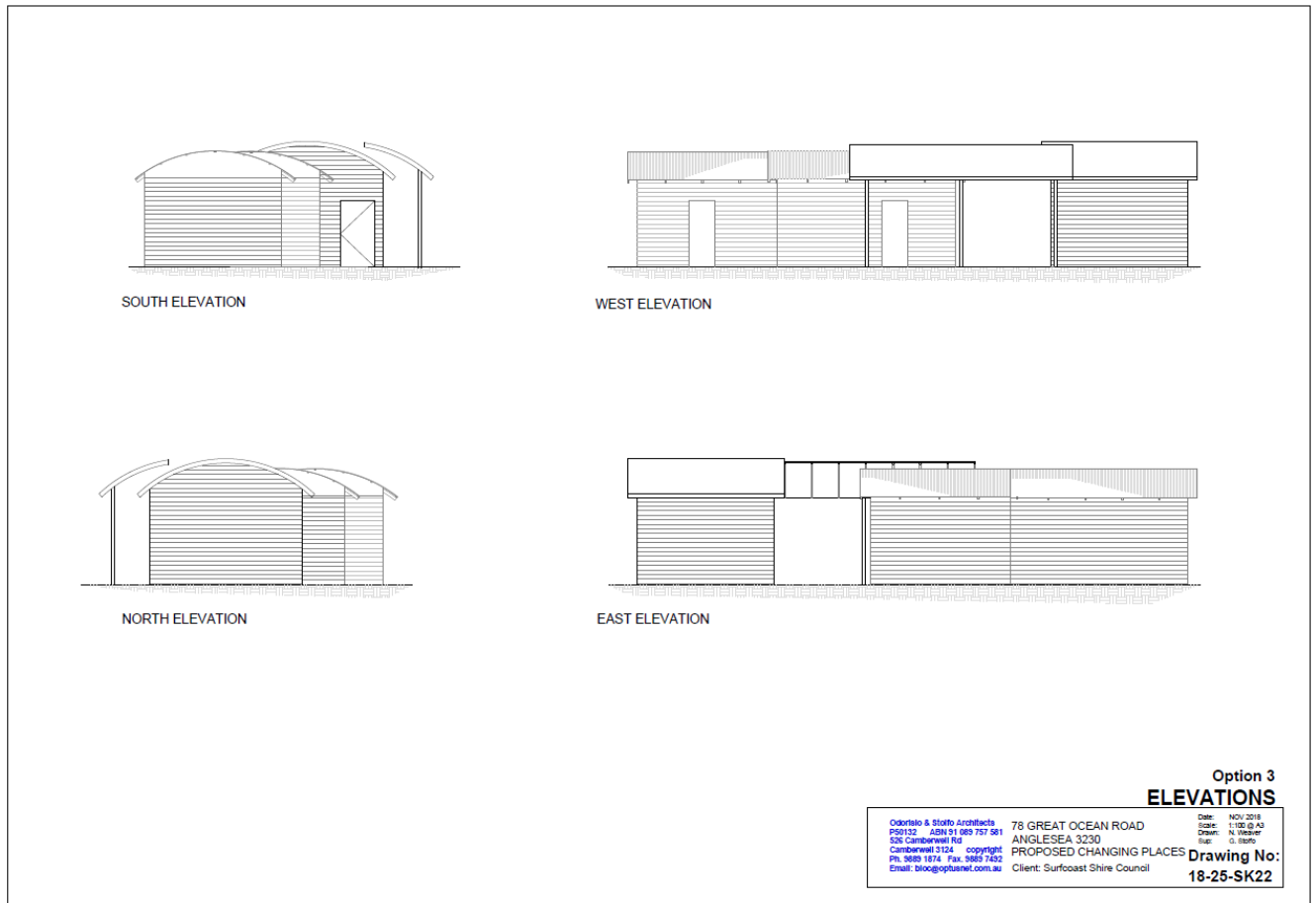
Non-Flammable

Scyon LINEA

Colour: Dulux Klute

Roof: Colorbond ultra

Colour: Windspray/ Dune





Front View 3-1



View 3-2



View 3-3



View 3-4

Colorbond Colour chart:



All colours in the COLORBOND® steel standard colour range are available in COLORBOND® Ultra steel for coastal and industrial environments. Please speak to your supplier for more information regarding availability. Should you require a colour not shown in the COLORBOND® steel standard colour range, please speak to your supplier regarding availability.