

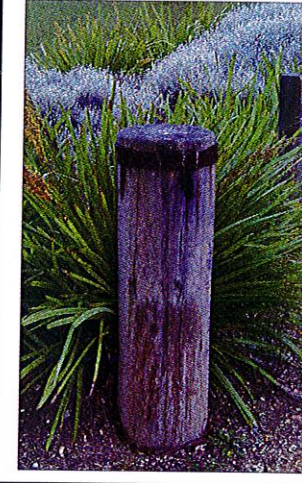
### KEY

- Proposed Timber Wheel Stops  
timber wheel stops as per Jan Juc SLSC car park detail
- Proposed Timber Bollards  
salvaged cypress timber bollards as per Jan Juc SLSC car park detail
- Swale alignment  
refer Dwg No. L01 for setout and Engineers Dwg No. C1
- note: Mulch to all planted areas, refer L01

## PLANTING KEY

SYMBOL	BOTANIC NAME	COMMON NAME	SPACING	PLANTING ZONE
<b>Zone 1</b>				
	<i>Isolepis nodosa</i>	Knobby Club Rush	100% @ 250cts max.	<b>Zone 1</b> mass planting along swale and beach entry
<b>Zone 2</b>				
	<i>Acacia retinoides var. uncinifolia</i>	Wirilda	as indicated	<b>Zone 2</b> open grassy understorey with light shade canopy
	<i>Poa poiiformis</i>	Coast Tussock Grass	50% @ 250cts max.	
	<i>Dianella sp.</i> <i>Dicandra repens</i>	Flax Lily Kidney Weed	40% @ 200cts max 10% @ 200cts max planted in clusters of 3-9	
<b>Zone 3</b>				
	<i>Acacia retinoides var. uncinifolia</i>	Wirilda	as indicated	<b>Zone 3</b> a green belt of glossy tufting forms and low shrubs
	<i>Dianella sp.</i> <i>Rhagodia candolleana</i>	Flax Lily Seaberry Saltbush	70% @ 250cts max. 30% @ 400cts max. planted in clusters of 3-5	
<b>Zone 4</b>				
	<i>Melaleuca lanceolata</i>	Moonah	as indicated	<b>Zone 4</b> supplementary planting to existing vegetation to deter informal access to sand dunes and to provide shade to car park boundary
	<i>Leucopogon parviflorus</i>	Coast Beard Heath	10% @ 2000cts	
	<i>Austrostipa flavescens</i>	Spear Grass	20% @ 250cts	
	<i>Austrodanthonia sp.</i>	Wallaby Grass	20% @ 250cts	
	<i>Dianella sp.</i>	Flax Lily	20% @ 250cts	
	<i>Olearia axillaris</i> <i>Poa poiiformis</i>	Coast Daisy Coast Tussock Grass	10% @ 500cts 20% @ 250cts	
<b>Zone 5</b>				
	<i>Isolepis nodosa</i> <i>Poa poiiformis</i>	Knobby Club Rush Coast Tussock Grass	60% @ 250cts max. 40% @ 250cts max.	<b>Zone 5</b> beach access track revegetation

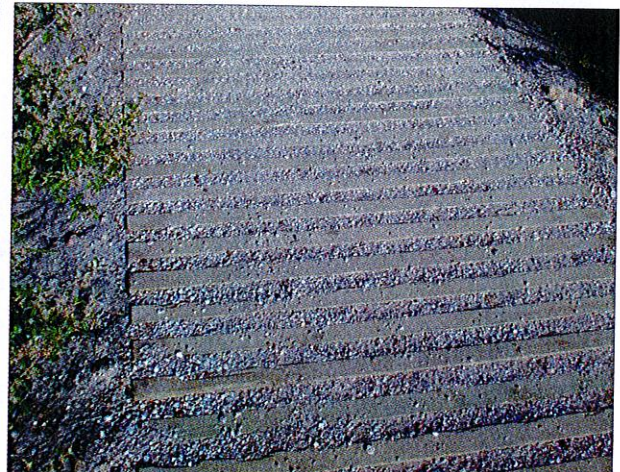
**FEATURE BOLLARD**  
Cypress - salvaged timber



**TIMBER WHEEL STOP**  
to be installed in crushed rock surface

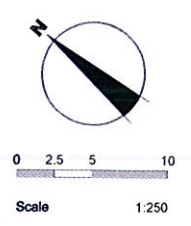


**TIMBER TREAD PATH DETAIL**  
infilled with granitic gravel to match beach access entry area



REVISION	DATE	ZONE
A Preliminary	10.12.04	
B Final Issue	22.12.04	

# CAR PARK REDEVELOPEMENT CONCEPT PLAN



**EARTH TECH**  
Landscape Architecture & Urban Design  
Geelong - Tel 5226 4200

Designed BH Nov 2004  
Drawn BH Nov 2004  
Checked  
Approved

**Optional Dress Beach Car Park**  
Torquay - Point Impossible  
Melways ref. map 494 - F11  
Car Park Redevelopment Concept Plan

Drawing No. 7704573 CD01 Rev B  
Sheet No. 1 of 1 L:\work\7704573\Landscape\Doc.dwg  
© Earth Tech Engineering ABN 61 089 482 888 A1